

WELCOME TO AEG

Welcome to the AEG fabric care range.

Integrated into every washer and dryer you'll find intelligent technology and responsive design, guaranteeing you exceptional performance time after time. You'll discover that one touch redefines what's possible at home.

We innovate so that you can elevate what you do to new heights every day.

CONTENTS

Imagine	3
Pioneers with a Vision	4
Tomorrow's Inspiration	6
Washing Machines	12
Dryers	14
Washer/Dryer	16
Accessories	18
Specifications	22
1st Klasse Care	26
Garantie	27



IMAGINE

Imagine putting your precious sweater in the washer. Imagine trusting a silk dress to a dryer.

We've not only imagined it, we've done it. Washed the black dress time after time. Dried a soft wool sweater over and over. Every time they emerge without shrinking or fading, still vibrant and soft. Because AEG has redefined what a washer and dryer are. Protectors of fabric. Defenders of colour. Guardians of fibres.

Unprecedented care for the life of your clothes.

IMAGINE THAT.

WE ARE PIONEERS WITH A VISION

We thrive upon innovation designed to give you the ultimate feeling of mastery in your kitchen. We see your needs of today and foresee the ones of tomorrow so that you can achieve results that don't just meet your standards, but exceed them.

We believe in intelligent technology and exceptional performance, helping you to take anything you do at home to the next level, every day.

We are proud of our distinctive engineering and responsive design, guaranteeing you the performance you expect and deserve.

We are a brand that people turn to for intelligent and exciting new ways to guarantee their outcome.

This has been our passion for over 125 years, and continues to be our passion today.

We are AEG.

And together with you, we are always an idea ahead.



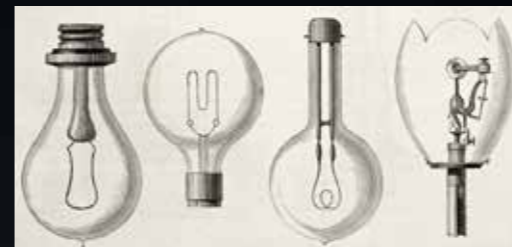
TOMORROW'S INSPIRATION

“

...using the language of design to make technically advanced appliances easy, intuitive and a sheer pleasure to use.

”

Hans Strohmeier
AEG designer



Tomorrow's inspiration is here

The way we eat will change. The way we dress will change. The way we live will change. We know how technology can enhance the world around us. It has even lit up an entire continent. More than 125 years ago, AEG introduced the light bulb from America to Europe. Connected to our grid, electricity spread across the continent, transforming lives.



That's why we make sure our appliances not only exceed your needs today, but also embrace tomorrow's technology to fit your future requirements.

Built in 1909, the AEG turbine factory in Berlin is an influential example of industrial architecture. Its revolutionary design features 100m long and 15m tall glass and steel walls on either side. It was a bold move and world first that would have a durable impact on architecture as a whole.

ALWAYS AN IDEA AHEAD

1910

First electric cooker

1912

First electrically powered fridge

1950

First washing machine

1952

First built-in fridge

1959

First combi fridge freezer

1964

First clothes dryer

1987

First induction cooktop

1997

First clothes dryer with heat pump

2014

First domestic full-size SousVide oven

EXTEND THE LIFE OF YOUR WARDROBE FAVOURITES

Top Tips

It is always best to follow the instructions on the fabric care label, but in some cases these may be outdated.

To help you care for your clothes, we've highlighted below our up-to-date advice.



Don't overwash

90% of the clothes we wash aren't dirty enough to be thrown in the laundry basket.



Lower temperatures

Temperature labels represent the maximum washing temperature, not the recommended temperature. A lower temperature isn't just gentler on the environment, but on the colours and fibres of your clothes too.



Avoid dry cleaning

This chemical heavy process can be hard on your clothes and the environment.



Do tumble dry

No shrinkage guaranteed* with AbsoluteCare® System Tumble Dryers, even when drying wool.

* Comparable with flat drying of wool



Steam refresh cycle

You can dry your silk blouses in AEG's AbsoluteCare® System dryer, retaining their shape as good as natural drying.



ProSteam® Technology

The steam removes creases and folds. It is also perfect for refreshing clothes, as it absorbs odours.

IT'S THE LITTLE BLACK DRESS GUARDIAN

Faultless fabric never goes out of style. Your delicate pieces need to be treated gently to ensure that their quality is timeless, no matter how often you wear them. To achieve this, AEG 8000 Series washing machines with advanced ÖKOMix Technology blend detergents and then softeners with water before they enter the drum. In other washing machines, less than half of the fibres are reached by softeners. ÖKOMix Technology guarantees that, for the first time ever, every fibre is cleaned and cared for, even with shorter cycles. Every thread, every stitch, every fibre. Expertly protected.



ÖKOMix Technology
Unique pre-mixing of detergent, softener and water to reach every fibre.



ÖKOPower Programme
Superior cleaning results at 30°C in less than an hour.



ProSense® Technology
Automatically adjusts time, water and energy consumption to suit any load size.



IT'S THE WOOL SWEATER GUARDIAN

Never dared to tumble dry wool, silk or outdoor garments before? Now you can tumble dry everything you wash. From the softest wool sweater to the business shirt you wear every day. Dryers with the AbsoluteCare® System have tailored programming to control precisely the movement and temperature of the drying drum. Holding delicate fibres aloft so silks keep their shape and wrinkles are reduced. AbsoluteCare® System: redefining tumble drying for every fabric in your wardrobe. You can also use the new Outdoor Programme to restore water protection of outdoor garments better than air drying. This intelligent programme adapts the rotation used for treating hand-wash woollens so there's no shrinkage.



AbsoluteCare® System
Intelligent drum movements and temperature adjustments for ultimate care of your clothes.



SensiDry® Technology
Gentle and energy efficient drying at lower temperatures.



ProSense® Technology
Automatically adjusts time and energy consumption to suit any load size.

6000 SERIES | WASHING MACHINE

MEET THE EVERYDAY CLASSIC PRESERVER

Quality clothes are made to be worn, but everyday pieces need care to maintain their condition. In AEG 6000 Series washing machines, every load is measured to tailor each cycle and calculate just the right amount of water and energy the wash requires. Whether you wash one shirt or a full load, the washer will adjust accordingly, reducing wear and tear by taking the minimum amount of time necessary for a thorough clean. And reducing water, energy consumption and washing time for smaller loads. AEG washing machines keep clothes looking their best. Every wear, every wash.



ProSense® Technology

Automatically adjusts time, water and energy consumption to suit any load size.



SoftPlus Option

Improves softener distribution, protecting clothes and making them feel softer.



Hot and Cold Connection

Save up to 50% energy by using mains or stored hot water.



6000 SERIES | TUMBLE DRYER

MEET THE EVERYDAY QUALITY PRESERVER

Clothes that are exposed to too much heat and motion simply will not last. The ProSense® Technology in AEG tumble dryers uses temperature and humidity sensors to fine-tune the drying cycle every time, ensuring clothes are never over-dried. Whether you dry one shirt or a full load, the dryer will adjust accordingly to take the minimum time necessary. Reducing wear and tear. Protecting fabrics. Saving energy and time. Your everyday pieces are dried efficiently, monitored constantly and cared for cycle after cycle.



ProSense® Technology

Automatically adjusts time and energy consumption to suit any load size.



ProTex Soft Drum

Special design to improve airflow and reduce tangling and creases.



Full Reversible Door

Simplified handling with the option of four different handle positions.



WASHING MACHINES EVERY FIBRE CLEANED AND PROTECTED

Imagine a washing machine that you can trust to keep your colours as vibrant and black as possible, whilst never compromising on cleaning performance.

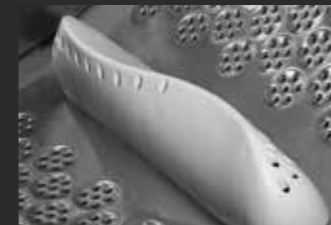
A machine that washes deeply and thoroughly every single time. Finally, there is no need to compromise on performance or care with AEG. Whilst conventional washing machines need high temperatures to activate detergent and clean properly, AEG's ÖKOMix premixes the detergent in a

separate chamber to activate all the enzymes before spraying on to your garments. So detergents can work at their best even in lower temperatures, to ensure the colour, shape and feel of each of your garments is maintained, wash after wash. It's more than just a washing machine, it's the guardian of your clothes.



ÖKOMIX

ÖkoMix washing machines provide the ultimate care for today's fabrics, whilst saving resources. Premixing the detergent and softener before spraying it into the drum washes more thoroughly and evenly, yet uses less energy. You can even wash handwash-only woollens with complete confidence.



Low energy consumption, low noise

The ÖkoInverter motor offers you high energy efficiency, outstanding durability and ensures precisely controlled drum movement with low noise washing cycles.



Patented pre-mixing technology

The water and detergent are premixed before being sprayed into the drum, optimising water consumption and detergent efficiency.



Woolmark Green

'AEG gives consumers the confidence to put woollen garments into a machine, which has been lacking for the last 30-40 years.'

Peter Ackroyd,
The Woolmark Company

CARING FOR CLOTHES, SAVING WATER AND ENERGY

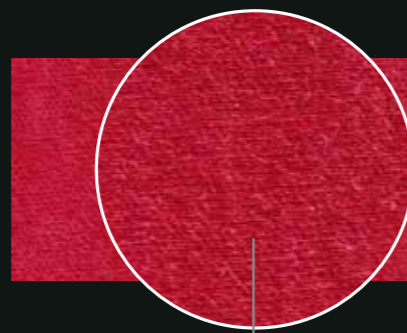
ProSense technology intelligent sensors optimises and displays the estimated wash time within 30 seconds of starting the wash cycle. Whether it is a few shirts or your entire weekly laundry, the wash time, water and energy consumption adjust to ensure they are only washed for the exact amount of time required. This ensures that fabrics suffer less wear and tear, maintaining colour and texture.

With ProSense® Technology you get:

Faster load detection – quickly adapts the cycle after the programme starts.

Higher accuracy – optimises the cycle based on the textile type by detecting the load size and measuring the water absorption.

Greater flexibility – adapts the cycle for even the smallest loads (1-2 kg).



6000 Series with ProSense®
An optimised wash cycle results in less over-washing and less wear and tear.

ProSense® Technology adjusts time, water and energy consumption to the size of the load, even if it is just a single shirt or your entire weekly laundry. This is thanks to specific sensors that will intelligently control the cycle settings and take care that your clothes are only washed for the exact amount of time needed. This ensures that fabrics suffer less wear and tear, maintaining colour and texture for longer.

PROSENSE LOAD SENSOR

Intelligent sensors optimises and displays the estimated wash time within 30 seconds of the wash cycle starting.



Except L98690FL

ÖKOINVERTER MOTOR

Similar to professional machines, the OKOInverter Motor works without brushes, extending the working life of the motor whilst using less energy.



Except L98690FL

TIME SAVE

Reduces your washing time up to 50% on certain programs for smaller loads saving you energy and time.



STEAM REFRESH

Quickly refresh your garments without the need for washing



PLUSSTEAM

Complete a wash cycle with steam to reduce wrinkles, saving time and reduce the need for ironing.



LF8C1612A & LF8C9412A only

AQUA CONTROL SYSTEM

Automatically shuts off the water inlet if a leak is detected in the hose.



WASH WITH CONFIDENCE

Your favourite pieces need to be treated gently to ensure their quality remains timeless no matter how often you wear them. ÖKOMix technology in the 8000 series washing machine guarantees that every fibre is cleaned and cared for.



8000 SERIES LF8C1612A

10kg ÖKOMix washing machine

KEY FEATURES

- ÖKOPower (59 minutes) program
- ProSense load sensor
- Steam Refresh program
- Interior LED light
- Aqua stop device
- Low washing noise level 47dB(A)
- Spin speed 1600rpm

SPECIFICATIONS

Product dimensions (HxWxD) in mm

850 x 600 x 660

WASHING MACHINES



9000 SERIES
L98690FL

9kg ProTex washing machine

KEY FEATURES

- 16 wash programs
- Spin speed 1600rpm
- OptiSense wash system
- Steam program
- Weight sensor
- Inverter motor
- Super Eco wash program
- Wool plus program
- Anti-allergy 67°C program
- Silent system
- Time save option
- Memory function
- LogiControl™ display
- AquaControl and alarm

SPECIFICATIONS

Product dimensions (HxWxD) in mm
850 x 600 x 605



8000 SERIES
LF8C9412A

9kg ÖKOMix washing machine

KEY FEATURES

- OKOPower (59 minutes) program
- ProSense load sensor
- Steam Refresh program
- Aqua stop device
- Low washing noise level 47dB(A)
- Spin speed 1400rpm

SPECIFICATIONS

Product dimensions (HxWxD) in mm
850 x 600 x 660



8000 SERIES
LF8E8411A

8kg ÖKOMix washing machine

KEY FEATURES

- OKOPower (59 minutes) program
- ProSense load sensor
- Steam Refresh program
- Aqua stop device
- Spin speed 1400rpm

SPECIFICATIONS

Product dimensions (HxWxD) in mm
850 x 600 x 660



6000 SERIES
LF6E8431A

8kg ProSense washing machine

KEY FEATURES

- ProSense load sensor
- Steam Refresh program
- Aqua stop device
- ÖKOInverter motor
- Spin speed 1400rpm

SPECIFICATIONS

Product dimensions (HxWxD) in mm
850 x 600 x 600

DRYERS

PRECISE PROTECTION FOR YOUR CLOTHES

Never dared to tumble dry wool, silk or outdoor garments before? Now you can tumble dry everything you wash. From the softest wool sweater to the business shirt you wear every day. Dryers with the AbsoluteCare System have tailored programming to precisely control the movement and temperature of the drying drum ensuring every fabric gets the right movement and temperature to dry it completely whilst preserving its quality look and feel.



Programs in our unique AbsoluteCare System precisely control the movement and temperature of the drying drum. Woollens are kept flat against the drum to replicate flat drying. Outdoor garments are given just the right amount of heat to restore the full functionality of their waterproof membrane. Silks are held aloft in the cradle movement of the drum to protect from damage. Every fabric gets the right drum action and temperature to dry it completely whilst preserving their quality look and feel.



The wool wash cycle has been approved by The Woolmark Company for washing even your hand-wash only woollens.

SENSIDRY HEAT PUMP

SensiDry Technology is gentle and energy efficient through lower drying temperatures.



8000 Series & T97689IH only

PROTEX SOFT DRUM

Reverse tumbling action ensures better tumbling and airflow to result in even drying and less creasing.



Except L98690FL

8 ENERGY STAR RATING

SensiDry heat pump technology delivers the benefits of perfect drying at a much lower running cost.



T8DHC862B & T97689IH only

PROSENSE DRYING SENSOR

ProSense protects fabrics from over drying by optimising time and energy consumption to suit individual loads.



OKOFLOW SINGLE FILTER

Single filter that is easy to reach and clean, maintaining drying effectiveness and energy efficiency of your dryer.



LF8C1612A & LF8C9412A only

REVERSIBLE DOOR

Customise to your needs with four different handle positions.



DARE TO DRY EVEN YOUR HAND WASH ONLY ITEMS

Trust AEG with our AbsoluteCare System, where intuitive and intelligent technology have been carefully designed to dry even your most delicate hand wash only garments. The fast drum speed motion ensures woollen garments lay flat on the inside of the drum walls to replicate flat drying.

There are no damaging movements in the drying cycle to shrink or felt delicate garments. Designed for your outdoor garments, the outdoor cycle restores water protection, thanks to careful temperature control. An exact temperature is applied for a specific amount of time to ensure that the restoration effect on the garment occurs. Whilst, the specialised silk program keeps the silks aloft in the cradle movement of the drum running at a low speed and uses reverse action in a very gentle and efficient way to reduce wrinkles.



The wool wash cycle has been approved by The Woolmark Company for washing even your hand-wash only woollens.

DRY WITH CONFIDENCE

Dare to dry garments you never thought you could with 8000 series tumble dryers – even your softest woollen sweater. Our Woolmark accredited tumble dryers come with our unique AbsoluteCare® System, a tailored program that precisely controls the movement and temperature of the drying drum. Care more for your favourite clothes.



8000 SERIES T8DHC862B

8kg AbsoluteCare heat pump dryer

KEY FEATURES

- SensiDry Heat Pump System
- ProSense drying sensor
- Silk program
- ÖKOFlow single filter system
- Interior LED light
- Full reversible door
- 8 Energy star rating

SPECIFICATIONS

Product dimensions (HxWxD) in mm
850 x 600 x 660

DRYERS



9000 SERIES
T976891H

8kg ProTex Inverter heat pump dryer

KEY FEATURES

- 16 programs
- Inverter heat pump dryer
- 6 energy star rating (achieves 8.6 energy star rating index)
- Inverter motor
- Woolmark Blue certification
- OptiSense auto program
- Time drying
- Silk and wool program
- Extra quick program
- Reverse tumbling drum action
- Anti-crease option
- Internal drum light
- Delay start
- Child lock
- LogiControl™ display
- 65 dB(A) noise level

SPECIFICATIONS

Product dimensions (HxWxD) in mm
850 x 600 x 600



8000 SERIES
T8DHE842B

8kg AbsoluteCare heat pump dryer

KEY FEATURES

- SensiDry Heat Pump System
- ProSense drying sensor
- Silk program
- ÖKOFlow single filter system
- Interior LED light
- Full reversible door
- 7 Energy star rating

SPECIFICATIONS

Product dimensions (HxWxD) in mm
850 x 600 x 600



6000 SERIES
T8DHE842B

8kg ProSense condenser dryer

KEY FEATURES

- ProSense drying sensor
- ÖKOFlow single filter system
- Duvet program
- Full reversible door
- Inverter motor
- 2 Energy star rating

SPECIFICATIONS

Product dimensions (HxWxD) in mm
850 x 600 x 600

9000 SERIES | WASHER DRYER

FREE UP VALUABLE SPACE AT HOME

Efficiency meets performance in the new ÖkoKombi washer dryer from AEG. It's the right choice when space is at a premium. With the latest heat pump technology, it is rated 6 energy star for drying, saving on energy consumption without compromising results. The unique ÖkoKombi washer dryer with Woolmark Blue certification for both washing and drying, treats each item in the gentlest possible manner.



The wool wash cycle has been approved by The Woolmark Company for washing even your hand-wash only woollens.

WASHER DRYER



9000 SERIES
L99699HWD

9kg/5kg ProTex heat pump washer dryer

KEY FEATURES

- 16 wash and dry programs
- Spin speed 1600rpm
- Heat pump system for drying
- Air condenser for drying
- Woolmark Blue certification for wash and dry
- OptiSense wash system
- Wash and dry in one go
- Auto and time drying
- Steam program
- Inverter motor
- Super Eco wash program
- Wool plus program
- Anti-allergy 67°C program
- Silent system
- Time save option
- LogiControl™ display
- AquaControl and alarm

SPECIFICATIONS

Product dimensions (HxWxD) in mm
870 x 600 x 605 (mm)



LAUNDRY CONSUMABLES & ACCESSORIES

Create extra space in your laundry room with this stacking kit, which includes a handy, built-in sliding shelf. You can safely install your tumble dryer on top of your washing machine without any fixings. The sliding shelf provides easy loading and unloading, as well as a practical place for folding your laundry.

STACKING KIT SKP11

Stacking kit for front load washers
and dryers with slideout shelf

KEY FEATURES

- No drilling required.
- Fits 60cm wide and 54-60cm deep appliances.
- Sliding shelf extends to max. 34cm.

SPECIFICATIONS

Product dimensions (HxWxD) in mm
65 x 605 x 610 (mm)



SPECIFICATIONS

Dryers

PRODUCT CODE	T8DHC862B	T976891H	T8DHE842B	T6DCE821B
Product name	8000 series 8kg AbsoluteCare heat pump	9000 series 8kg ProTex inverter heat pump	8000 series 8kg AbsoluteCare heat pump	6000 series 8kg ProSense condenser
Main Features				
AbsoluteCare System	Yes	Yes	Yes	
SensiDry Heat Pump System	Yes	Yes	Yes	
Drying sensor	ProSense	Optisense	ProSense	ProSense
Woolmark certification (label)	Blue		Blue	
OKOFlow filter	Yes	Yes	Yes	Yes
Programs				
Cottons/Synthetics/Delicates program	Yes	Yes	Yes	Yes
Wool program	Yes	Yes	Yes	
Silk program	Yes	Yes	Yes	
Easy Iron program	Yes	Yes	Yes	Yes
Sports program	Yes		Yes	Yes
Outdoor program	Yes	Yes	Yes	
Bed Linen program	Yes	Yes	Yes	Yes
Duvet program	Yes	Yes	Yes	Yes
Cottons Eco program				Yes
Mixed program				Yes
Jeans program		Yes		Yes
Dryness option (4 levels)	Yes	Yes	Yes	Yes
Time dry option	Yes	Yes	Yes	Yes
Anti-crease option	Yes	Yes	Yes	Yes
Delay start option	20 hrs	Yes	20 hrs	20 hrs
Refresh option	Yes		Yes	
Eco option	By default	Yes	Yes	
Extra silent option	Yes	Yes	Yes	
Extra Delicate/Sensitive option				Yes
Features				
Display	Large LED	Large LCD	LED	LED
ProTex soft drum	Yes	Yes	Yes	Yes
Inverter motor	Yes	Yes	Yes	Yes
Interior LED light	Yes	Yes	Yes	
Door size	XXL	XXL	XXL	XXL
Reversible door	Yes	Yes	Yes	Yes
Reverse tumbling action	Yes	Yes	Yes	Yes
Drain kit included	Yes	Yes	Yes	Yes
Performance				
Energy star rating	8	8	7	2
Annual energy consumption (kWh)	123	123	156	358
Drum volume (litres)	118	118	118	118
Drying noise level, dB(A)	65	65	66	62
Auto off	Yes	Yes	Yes	
Product Dimensions				
Height (mm)	850	850	850	850
Width (mm)	600	600	600	600
Depth (mm)	630	600	630	630
Full depth (mm)	660	640	660	660

Washer Dryer

PRODUCT CODE	T8DHC862B
Product name	8000 series 8kg AbsoluteCare heat pump
Main Features	
Display	LogiControlTM
Heat pump drying technology	Yes
Advanced washing technology	
OptiSense wash system	Yes
ProTex soft drum	Yes
Weight sensor	
XXL door opening	Yes
Steam refresh	Yes
Steam decreasing	Yes
Stains option	Yes
Extra rinse option	Yes
Time save option	Yes
Delay start option	20 hrs
Prewash option	Yes
Cottons program	Yes
Synthetics program	Yes
Easy iron program	Yes
Wool plus program	Yes
20 min 3kg program	Yes
Quick intensive program	
Super Eco program	Yes
Wash and Dry program: Cottons	Yes
Cotton Eco	Yes
Synthetics	Yes
Wool/Silk	Yes
Anti-Allergy	Yes
Auto drying	Yes
Time drying	Yes
Aqua control and alarm	Yes
Performance	
Wash - WELS* water rating	4
Wash - Energy star rating	4
Energy consumption (kWh/year)	383
Dry - Energy star rating	6
Energy consumption (kWh/year)	108
Dry water consumption (L)	1
Maximum spin speed rpm	1600
Washing noise level dB(A)	49
Spin noise level dB(A)	75
Stand-by power (W)	0.05
Off mode power (W)	0.05
AutoOff	Yes
Time dry option	Yes
Product Dimensions (mm)	
Height	870
Width	600
Depth^ (cabinet dimension only)	605
Full depth	640

Stacking Kit

PRODUCT CODE	SKP11
Product name	Stacking kit for front load washers and dryers with slideout shelf
Product Dimensions (mm)	
Height	65
Width	605
Full Depth	610

* Depth is measured to front corner of the unit, not centre of the curved front surface.

* WELS Standard AS/NZS 6400.2005

* Depth is measured to front corner of the unit, not centre of the curved front surface.

1ST KLASSE CARE

Perfection is an AEG hallmark, backed by our complete commitment to customer care.

We employ a dedicated service team ready to ensure your experience with AEG is nothing short of exceptional – every single day.

Same-day service*

Our technicians are trained to the highest AEG factory standards, ready to be deployed at a moment's notice. Call from any major capital city before midday (12 noon EST) and we'll be with you that very same day, if requested. Call after midday and we guarantee next day service with the option to accept a preferred two-hour window between 8am and 5pm, Monday to Friday within the metropolitan area.*

Dedicated contact centre

Like our products, our dedicated 1st Klasse Care Team offers unrivalled dependability. Contact us for delivery enquiries, installation details, product features, service updates and even product dimensions.

Prompt delivery & connection

At AEG, dedication to service begins long before your new appliance arrives. You can expect a call ten days prior to delivery to arrange the most suitable date, followed by a confirmation call on the eve of delivery to arrange the most suitable time of day.

Our professional AEG service personnel deliver to all major capital cities, and will unpack your new appliance and connect it to existing utilities*. We'll also remove your old appliance and all packaging to be environmentally recycled.

Electrolux will at all times comply with its obligations pursuant to law including Trade Practices (Australian Consumer Law) Act and Regulations and Australian Consumer Law. This warranty is in addition to the other rights and warranties you may have under the Australian Consumer Law (ACL) and Electrolux will at all times comply with its obligations at law including the ACL.

*Brisbane, Sydney, Melbourne, Adelaide, Perth.

*Delivery to regional and country areas can be arranged with your local retail store.

*Only basic installations of laundry and dishwashers supported, limited to a 10 amp plug and lead. Please consult your relevant tradesperson.

AEG 5 YEAR GARANTIE

Perfection is nothing without endurance.

Every AEG product in our collection is equipped with our assurance that it will perform beyond expectations. It's called AEG – Garantie. You will receive a 5 year warranty with every product. Of course, it's nothing less than you'd expect of high performing German standards.

We Garantie it.



Product information

The descriptors and illustrations in this publication apply to the specific products and models described as at the date of issue. Under our policy of continuous product development, product specifications may change without notice. Prospective purchasers should therefore check with their retailer to ensure this publication correctly describes the products that are being offered for sale.

All information supplied is to be used for general reference purposes only and is on the understanding that Electrolux Home Products Pty Ltd will not be liable for any loss, liability or damage of whatever kind arising as a result of reliance on such information. Colours of products illustrated are as close as printing limitations allow. Electrolux will at all times comply with its obligations pursuant to law including Competition and Consumer Act and Regulations.

Warranty

Electrolux Home Products warrants that for domestic applications, the AEG appliances featured in this brochure are free from defects in materials and workmanship for 5 years. All warranties are subject to the conditions set out in the warranty card accompanying the product when purchased.

